

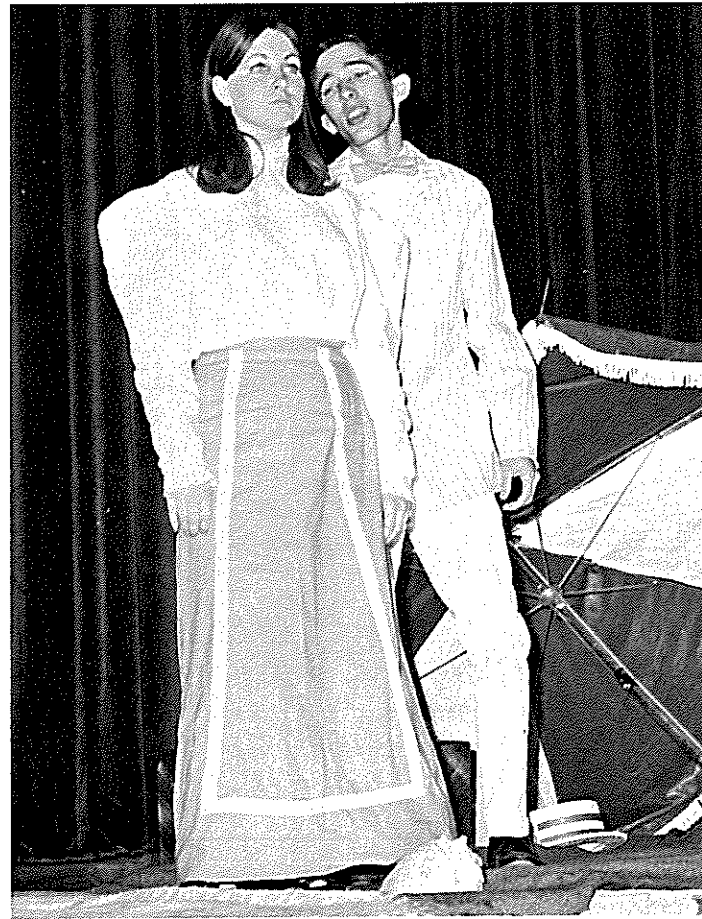
"Rosemary" Contest Play

The Contest Play, "Rosemary", which was presented in Fort Stockton, March 21, 1968, placed one member, Jan Kahlig, on the All-Star Cast.

The theme of the play was Woman Suffrage and the Development of Man through the ages. The theme was carried out through the use of props.

The shells showed theory of evolution--man from the sea. The umbrella showed man's necessity for shelter. The blankets emphasized the Greek and American Indian period of Man's Development. The time of the play, which was 1910, brought out Woman's Suffrage.

The Play was actually a record of man's historical development.



Jack Dunlop tries to talk to Jan Kahlig.



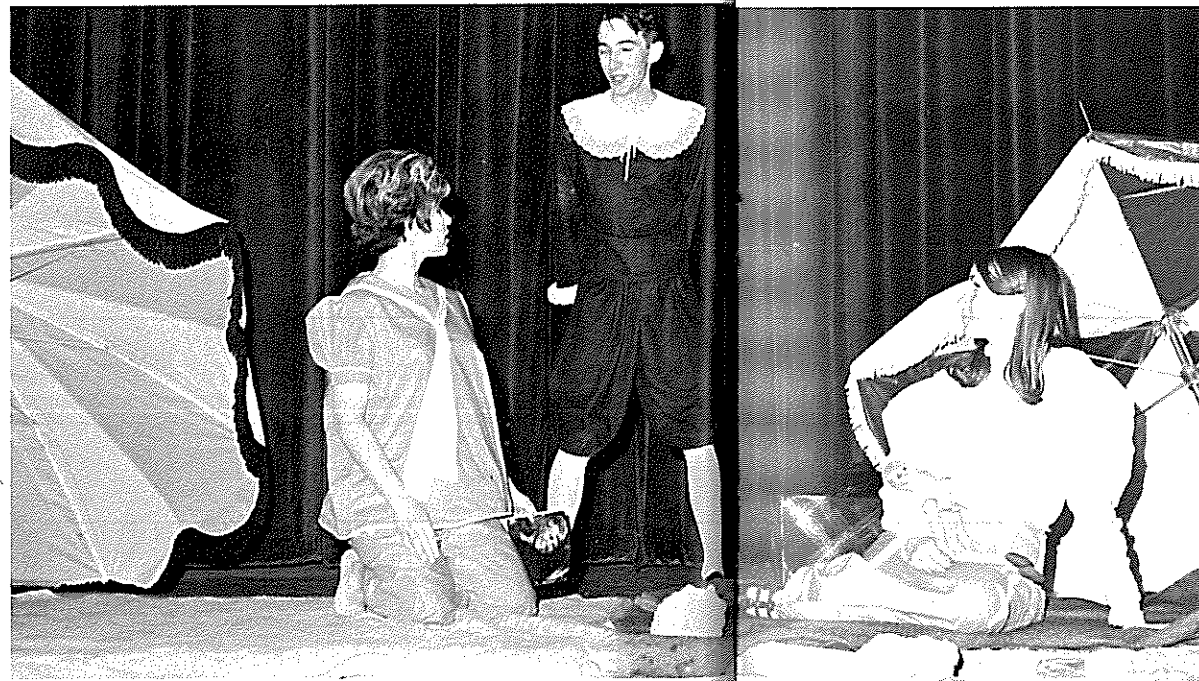
Jack Dunlop and Jan Kahlig throw sand during the play.



Jim Walker prepares to take a picture of Jack.



Jack and Jan play in the sand on the beach.



Jack, Jan and Peggy Berry have a leisurely day at the beach.

